

# D-SUB FEMALE CRIMP CONTACT

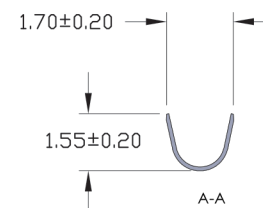
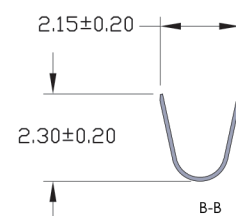
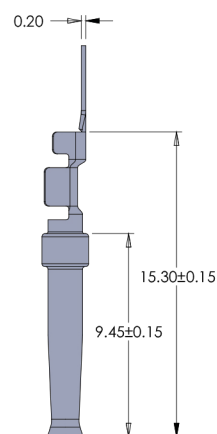
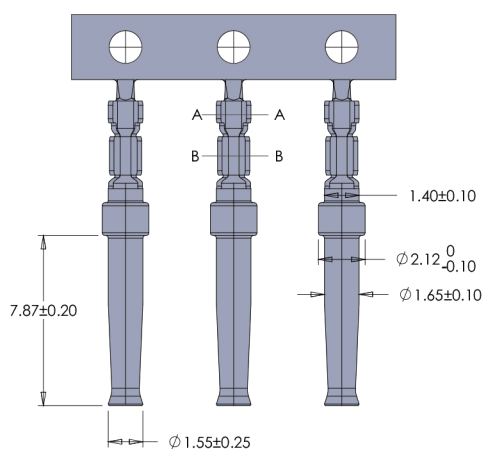


## STAMPED CONTACTS:

STAMPED CONTACTS ARE FURNISHED ON REELS FOR USE WITH THE SEMI-AUTOMATIC CRIMP AND STRIP/CRIMP MACHINES. THESE CONTACTS WILL ACCOMMODATE WIRE SIZES 22 TO 28 AWG STRANDED WIRE. CONTACTS ALSO AVAILABLE LOOSE IN BAG.

## NOTES:

1. MATERIAL: Brass
2. CONTACT PLATING:  
Contact Area= Gold over Nickel  
Crimp Area = Tin over Nickel
3. WIRE RANGE: 22 to 28 AWG



## PART NUMBERING

80 — 1 47 S — 05 X

CONTACTS

R = Reel

L = Loose piece in bag

