

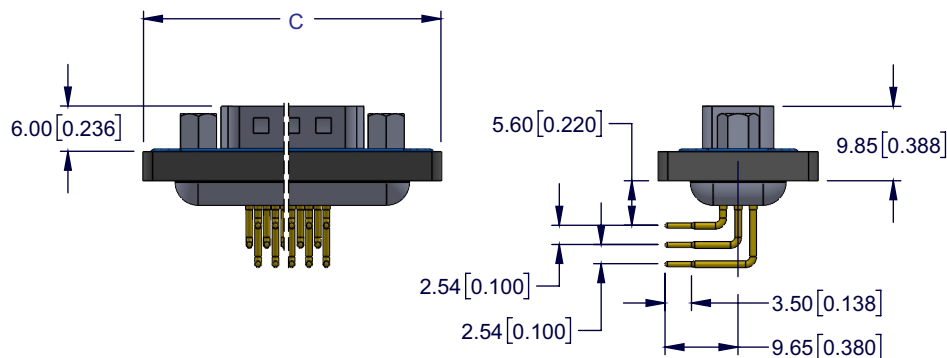
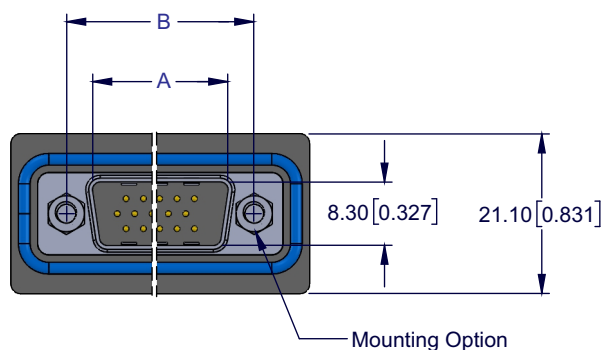
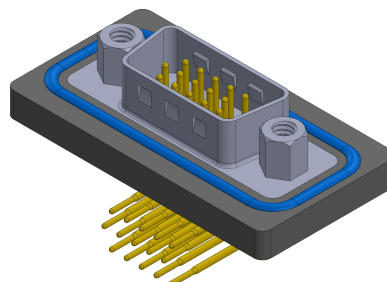
# D-SUB MALE WATERPROOF CONNECTOR

## HIGH DENSITY, RIGHT ANGLE



### SPECIFICATIONS:

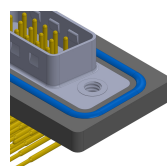
1. INSULATOR MATERIAL: Glass filled thermoplastic PBT, UL94V-0, Color Black
2. CONTACT MATERIAL: Copper Alloy
3. SHELL: Stainless Steel, passivated
4. O-RING: Silicone
5. EPOXY SEALANT: Epoxy
6. WATERPROOF RATE: IP67 as per IEC60529
7. CONTACT RESISTANCE: 10 mΩ max.
8. INSULATOR RESISTANCE: 5000MΩ min.
9. DIELECTRIC WITHSTANDING VOLTAGE: 1000V AC min. for 1 minute
10. CURRENT RATING: 3 Amp
11. OPERATING TEMPERATURE: -55°C to +105°C



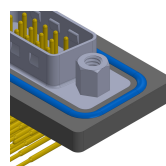
CONTACTS	A	B	C
15	16.92 [0.666]	25.00 [0.984]	39.50 [1.555]
26	25.25 [0.994]	33.32 [1.312]	47.80 [1.882]
44	38.96 [1.534]	47.04 [1.852]	61.50 [2.539]
62	55.40 [2.181]	63.50 [2.500]	77.80 [3.063]

Dimensions are in mm [inch]

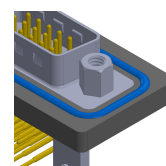
### Mounting Options



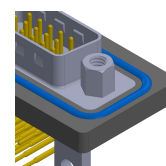
02= #4-40 UNC



03= #4-40 UNC  
Threaded Standoffs



10= #4-40 UNC  
Threaded Standoffs  
with board lock



17= #4-40 UNC  
Threaded Standoffs  
with hole

### PART NUMBERING

80 XX - 76 P - XX 1 1 - XX

NO. OF CONTACTS

15, 26, 44, 62

MOUNTING OPTIONS

02 = #4-40 UNC Hole

03 = #4-40 UNC Threaded Standoffs

10 = #4-40 UNC Threaded Standoffs with Board Lock

17 = #4-40 UNC Threaded Standoffs with hole

Consult Factory for other Mounting Options

CONTACT PLATING

50μ" Nickel Underplate

Mating Area

03 = Gold Flash

40 = 10μ" Gold

50 = 15μ" Gold

60 = 30μ" Gold

80 = 10μ" Gold

85 = 15μ" Gold

90 = 30μ" Gold

Consult Factory for other thicknesses

Tail

Gold Flash

Gold Flash

Gold Flash

Gold Flash

10μ" Gold

15μ" Gold

30μ" Gold