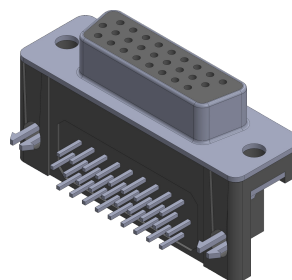
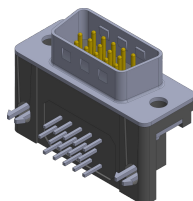
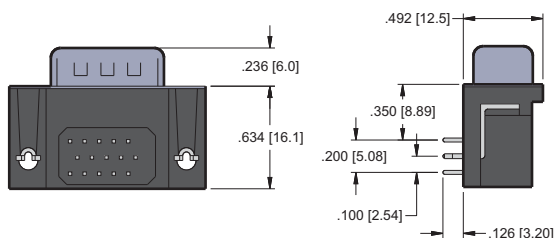
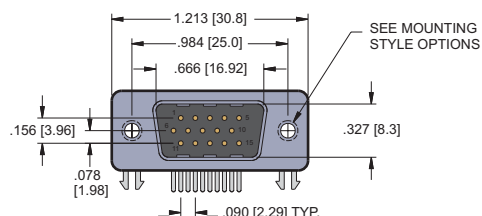


8000 D-Subminiature, 0.350" [8.89] Right Angle

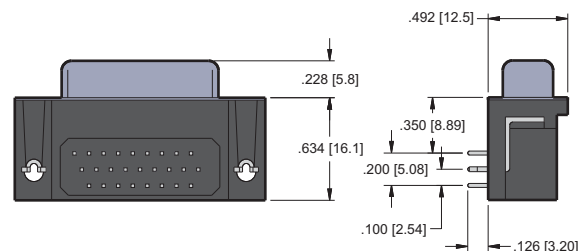
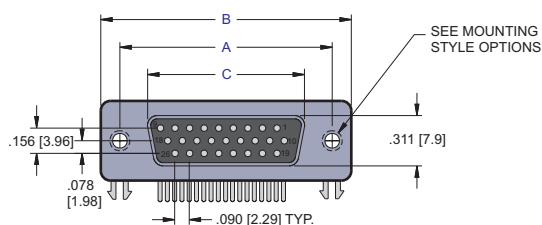
High Density with EMI Filter



PLUG



RECEPTACLE



RECEPTACLE

CONTACTS	A	B	C
15	0.984 [25.00]	1.213 [30.80]	0.642 [16.30]
26	1.312 [33.32]	1.543 [39.20]	0.969 [24.60]

Dimensions are in inches [mm]

PART NUMBERING

80 XX — 39 X — 08 XX — XX

SERIES CODE

NO. OF CONTACTS

15 = Plug
15, 26 = Receptacle

CONNECTOR TYPE

P = Plug
S = Receptacle

MOUNTING STYLE OPTIONS

08 = Riveted Ground Hooks with #4-40 UNC Open
Consult Factory for other Mounting Options

CONTACT PLATING

50μ" Nickel Underplate
Mating Area Tail
05 = Au Flash 100μ" Tin
20 = 15μ" Gold 100μ" Tin
30 = 30μ" Gold 100μ" Tin

SHELL PLATING

50μ" Nickel Underplate
1 = Tin Plating (standard)

INSULATOR COLOR

1 = Black