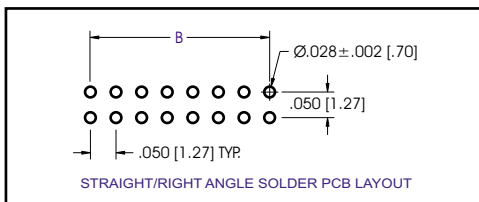
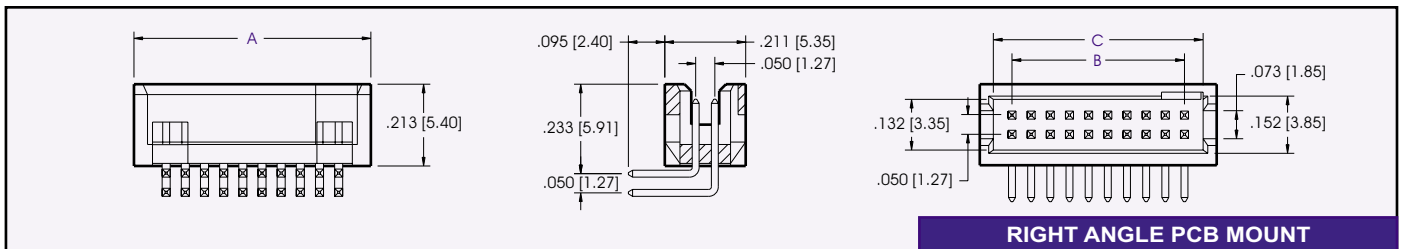
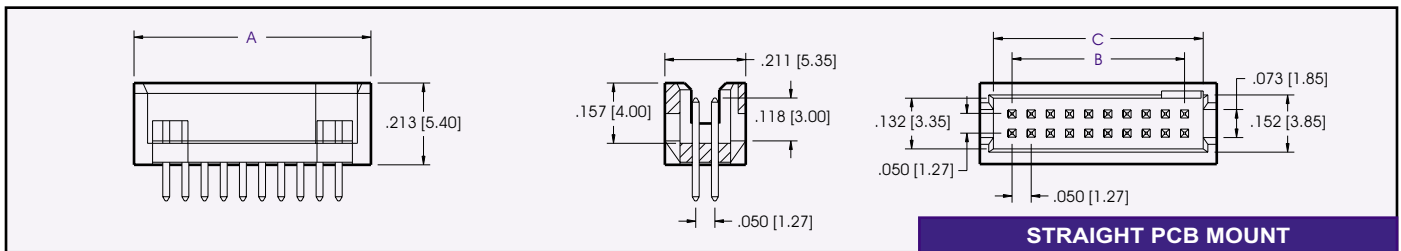
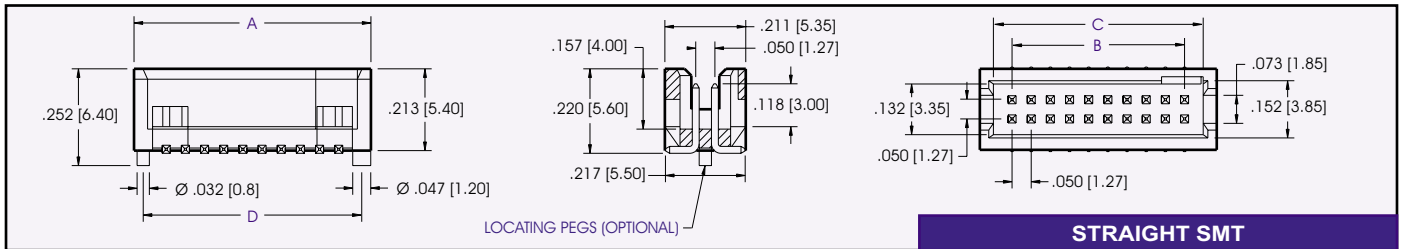
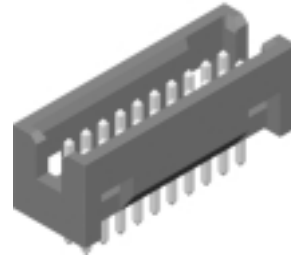




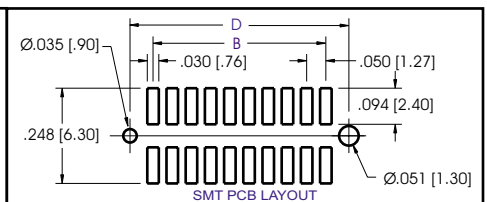
9600 Series Headers .050 x.050 Box Headers

Specifications

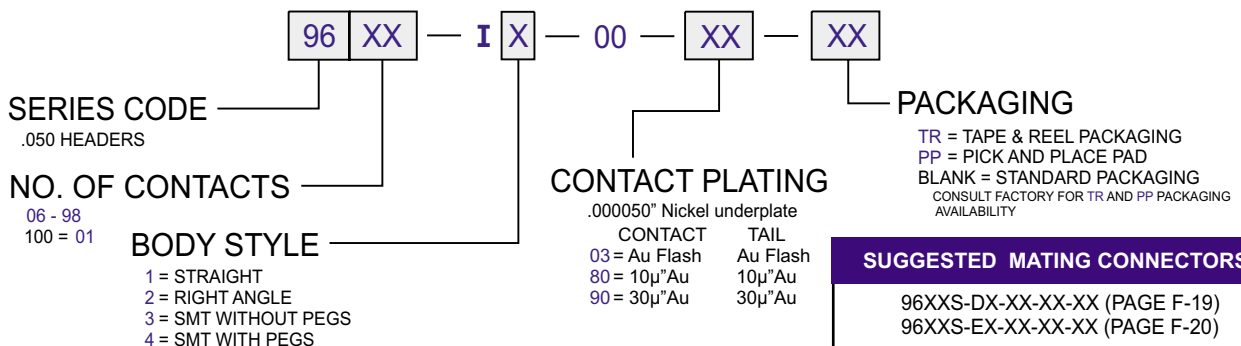
Insulator Material: Glass filled polyester, Thermoplastic,
94V-O Nylon-6T, UL Recognized.
Contact Material: Copper Alloy
Contact Plating: Gold or Tin over .000050" Ni
(See contact plating options).
Insulation Resistance: 5000 M ohms min.
Dielectric Withstand Voltage: 500 VAC
Current Rating: 1 AMP
Operating Temperature: -40°C To +105°C
Max Operating Temp: 230°C for 60 seconds
UL File Numbers: E146967 & E176234



$A = .118 + .050 \times \text{No. of Pos.}$
 $B = .050 \times (\text{No. of Cont./2} - 1)$
 $C = .074 + .050 \times (\text{No. of Cont./2} - 1)$
 $D = .120 + .050 \times (\text{No. of Cont./2} - 1)$



PART NUMBERING



SUGGESTED MATING CONNECTORS

96XXS-DX-XX-XX-XX (PAGE F-19)
96XXS-EX-XX-XX-XX (PAGE F-20)

CONSULT FACTORY FOR CONNECTORS BUILT TO YOUR SPECIFICATION